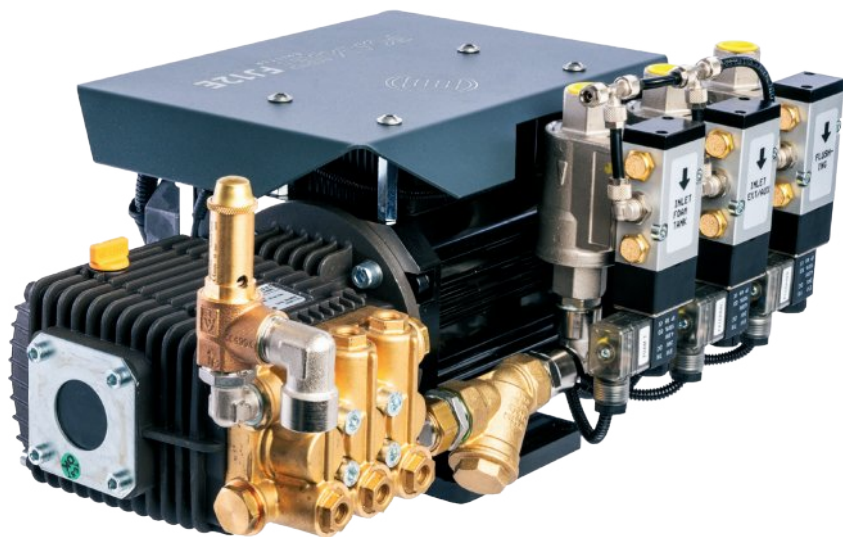


# FOAMJET 45E

## DIRECT INJECTION FOAM SYSTEM



## KEY FEATURES

- Automatic foam dosing system in the range of 0.1 % to 8 %, max. 45 L/min
- Precision control with steps of 0.1 %
- Top performance on extreme low injections – from 0.1 LPM
- Large intensive bright 7” LCD for easy readability of process data
- Magnetic-Inductive Flow sensors and BLCD motor
- Injection of foam concentrate at the discharge side of the fire pump

**FOAMJET 25E** is positive pressure proportioning system (EN 16327-PPPS) with digital control used to maintain selected constant foam-water proportion regardless of water flow fluctuations.

The system accurately delivers foam concentrate from 0.1 % to 8 % through a check valve/injector fitting, directly into the water discharge stream of the fire pump.

The proportioning system uses electrically driven foam pump. The pump and motor drive are designed for long-term load with over-temperature and current protection. High quality industrial components as well maintenance-free brushless motor (BLDC) ensure top performance of the injection system.



## SPECIFICATIONS

### POWER

**Supply Voltage** 22 -30 V DC

**Current** 60 A max., standard version (16 bar)

**Electrical Protection** overvoltage, transients, reverse polarity, load dump

### INTERFACES

**CAN** CAN, ISO 11898 2.0 A/B up to 1 Mbps, protocols

**CAN link** 1x T-connection, configurable termination 120 ohm via DIP switch, node ID definition via software

**USB** 1x USB 2.0, for firmware update

### FOAM PUMP AND COMPONENTS

**EN16327 classification** EN16327-PPPS 1600/0.1-1.5

**Pump Type** 3-plunger pump, 50 bar max.

**El. Motor** high performance BLDC motor, 1200 W, thermal protected

**Foam Injection Range** 0.1 - 45 L/min @ 16 bars

**Fine Adjustment** 0.1%

**HMI - Control Panel** LCD TFT 7”, sunlight readable, anti-reflective glass, 10 soft keys + touch

### ENVIROMENT

**IP Class (IEC529)** IP65 pump assembly (pump, motor, controller, connectors), LCD, Flowmeter

**EMC Conformity** EN61000-6-2 noise immunity  
EN61000-6-4 radiation of interference

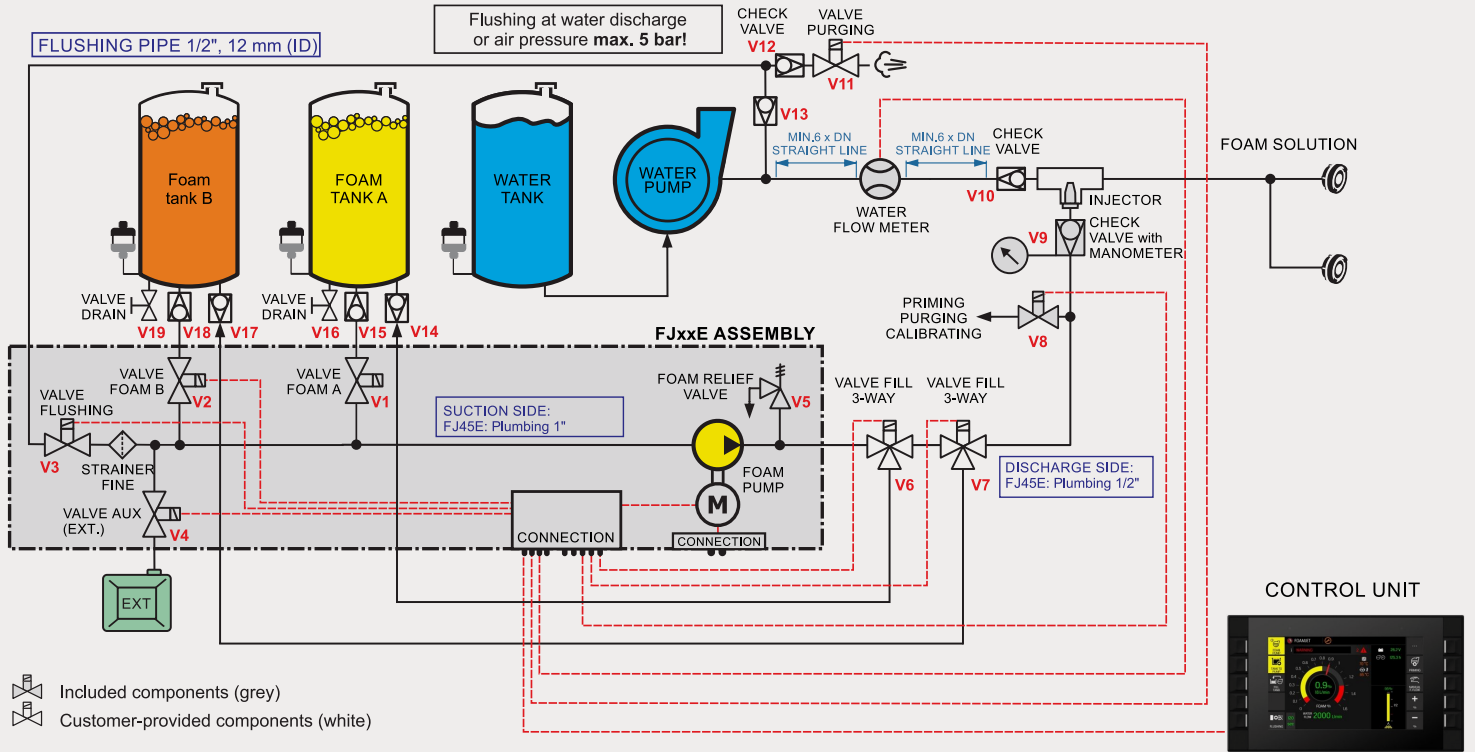
**Temperature Range** storage -40° to +85°C (-40° to 185°F)  
for pump operating 5° to +85°C (+41° to 185°F)  
for electronic units operating -30° to +85°C (-22° to 185°F)

### SIZE & WEIGHT

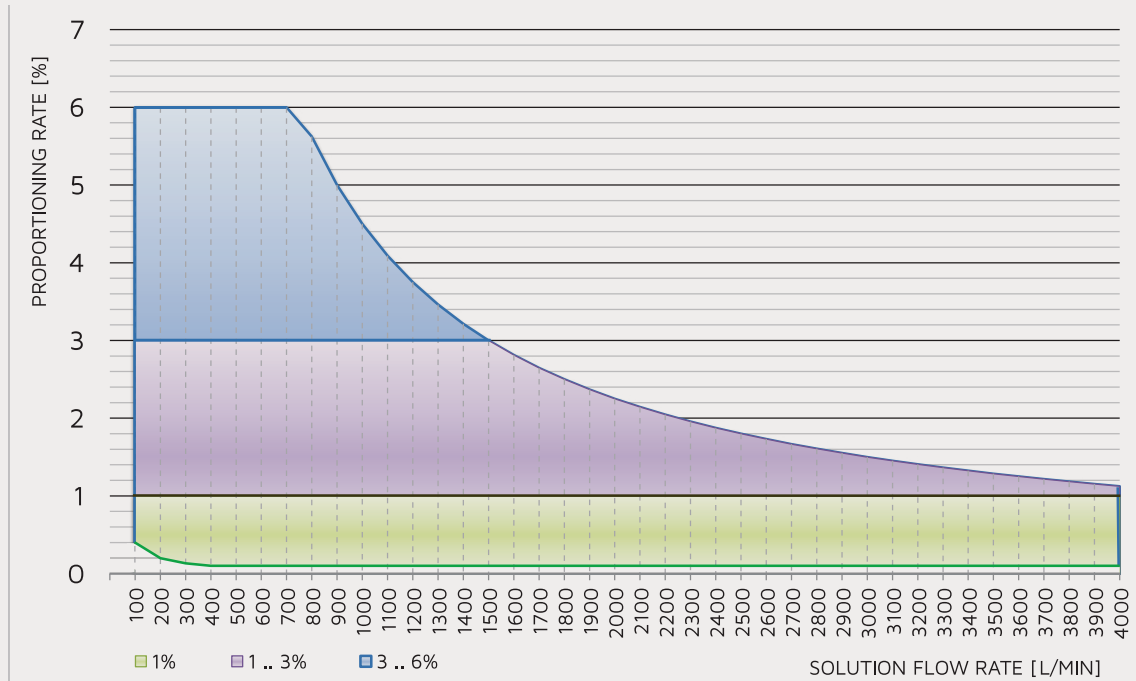
**W x H x D** 64 x 49 x 28 cm

**Weight** 52 kg

## PLUMBING DIAGRAM



## OPERATING RANGE



## PRODUCT CODE

FoamJet, electric motor driven

Ordering code example:

<b>F</b>	<b>J</b>	<b>4</b>	<b>5</b>	<b>E</b>	<b>-</b>	<b>1</b>	<b>E</b>	<b>F</b>	<b>2</b>	<b>0</b>	
FJ TYPE 12: 0.1 .. 12 LPM 25: 0.1 .. 25 LPM 45: 0.1 .. 45 LPM				1: ONE PRODUCT 2: TWO PRODUCTS		E: EXTERNAL SUCCTION		F: FILL FUNCTION		WATER FLOW METER DIMENSION-INCH 20: DN50 = 2.0" 25: DN65 = 2.5" 30: DN80 = 3.0" 40: DN100 = 4.0" T: TWIN SYSTEM	