

FOAMJET 25E

DIRECT INJECTION FOAM SYSTEM



KEY FEATURES

- Automatic foam dosing system in the range of 0.1 % to 6 % (8%), max. 25 L/min
- Precision control with steps of 0.1 %
- Top performance on extreme low injections – from 0.1 LPM
- Large intensive bright 7” LCD for easy readability of process data
- Magnetic-Inductive Flow sensors and BLCD motor
- Injection of foam concentrate at the discharge side of the fire pump

FOAMJET 25E is positive pressure proportioning system (EN 16327-PPPS) with digital control used to maintain selected constant foam-water proportion regardless of water flow fluctuations.

The system accurately delivers foam concentrate from 0.1 % to 8 % through a check valve/injector fitting, directly into the water discharge stream of the fire pump.

The proportioning system uses electrically driven foam pump. The pump and motor drive are designed for long-term load with over-temperature and current protection. High quality industrial components as well maintenance-free brushless motor (BLDC) ensure top performance of the injection system.



SPECIFICATIONS

POWER

Supply Voltage 22 -30 V DC

Current 55 A max., standard version (16 bar)

Electrical Protection overvoltage, transients, reverse polarity, load dump

INTERFACES

CAN CAN, ISO 11898 2.0 A/B up to 1 Mbps, protocols

CAN link 1x T-connection, configurable termination 120 ohm via DIP switch, node ID definition via software

USB 1x USB 2.0, for firmware update

FOAM PUMP AND COMPONENTS

EN16327 classification EN16327-PPPS 1600/0.1-1.5

Pump Type 3-plunger pump, 50 bar max.

El. Motor high performance BLDC motor, 1200 W, thermal protected

Foam Injection Range 0.1 - 25 L/min @ 16 bars

Fine Adjustment 0.1%

HMI - Control Panel LCD TFT 7”, sunlight readable, anti-reflective glass, 10 soft keys + touch

ENVIROMENT

IP Class (IEC529) IP65 pump assembly (pump, motor, controller, connectors), LCD, Flowmeter

EMC Conformity EN61000-6-2 noise immunity
EN61000-6-4 radiation of interference

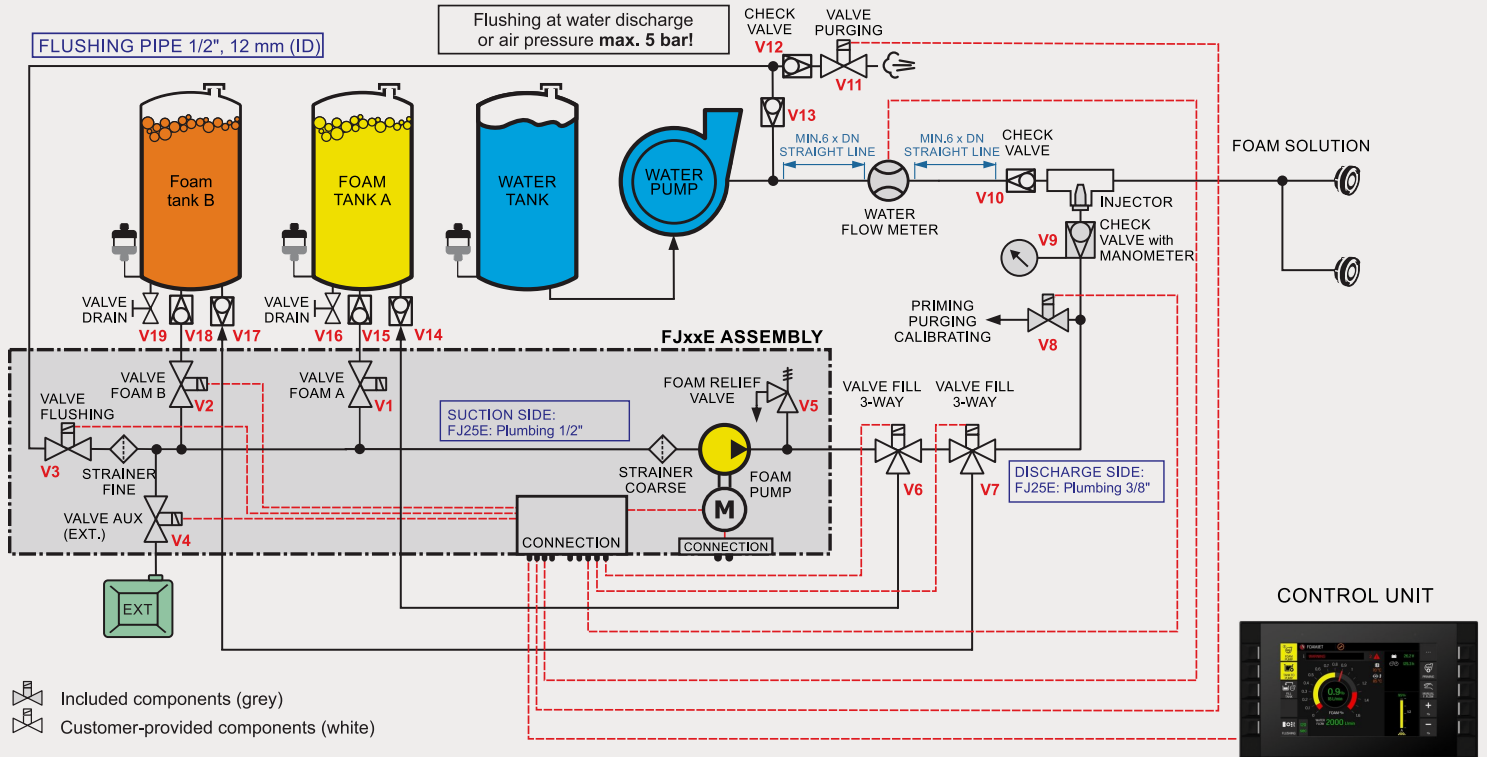
Temperature Range storage -40° to +85°C (-40° to 185°F)
for pump operating 5° to +85°C (+41° to 185°F)
for electronic units operating -30° to +85°C (-22° to 185°F)

SIZE & WEIGHT

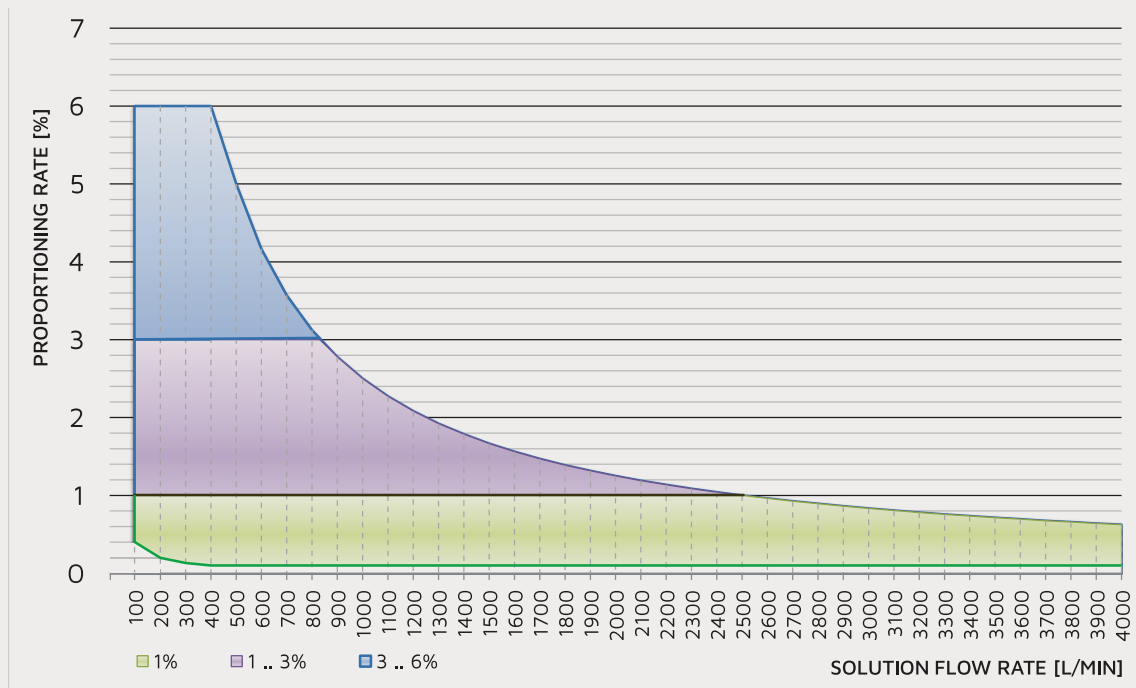
W x H x D 61 x 36 x 28 cm

Weight 34 kg

PLUMBING DIAGRAM



OPERATING RANGE



PRODUCT CODE

FoamJet, electric motor driven

Ordering code example:

F	J	2	5	E	-	1	E	F	2	0	
FJ TYPE 12: 0.1 .. 12 LPM 25: 0.1 .. 25 LPM 45: 0.1 .. 45 LPM				1: ONE PRODUCT 2: TWO PRODUCTS		E: EXTERNAL SUCCTION		F: FILL FUNCTION		WATER FLOW METER DIMENSION-INCH 20: DN50 = 2.0" 25: DN65 = 2.5" 30: DN80 = 3.0" 40: DN100 = 4.0" T: TWIN SYSTEM	