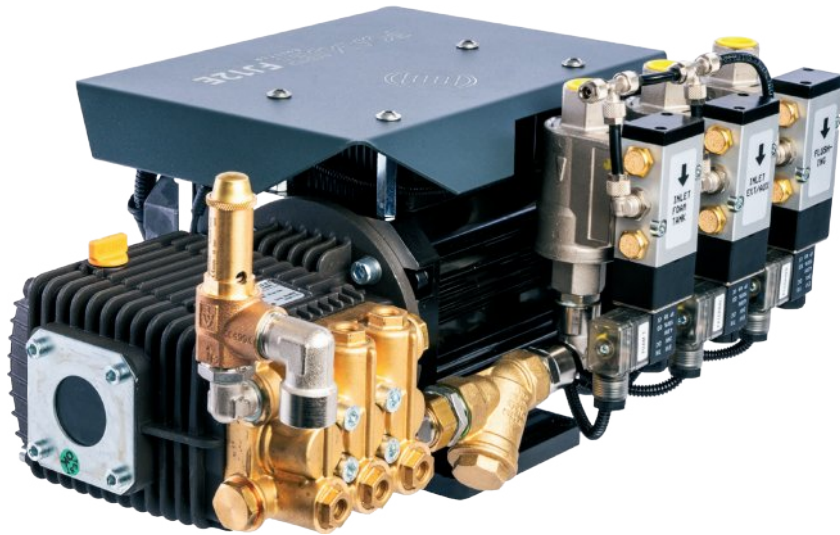


# FOAMJET 12E/10EH

## DIRECT INJECTION FOAM SYSTEM



## KEY FEATURES

- Automatic foam dosing system in the range of 0.1 % to 6% (8 %), max. 12 L/min
- Precision control with steps of 0.1 %
- Top performance on extreme low injections – from 0.1 LPM
- Large intensive bright 7” LCD for easy readability of process data
- Magnetic-Inductive Flow sensors and BLCD motor
- High Pressure (HP) version – up to 10 L/min at 50 bar

**FOAMJET 12E/10EH** is positive pressure proportioning system (EN 16327-PPPS) with digital control used to maintain selected constant foam-water proportion regardless of water flow fluctuations.

The system accurately delivers foam concentrate from 0.1 % to 6 % through a check valve/injector fitting, directly into the water discharge stream of the fire pump. The system can be setup also as a high-pressure unit allowing an injection pressure even up to 50 bars. In this case safety relief valve and flow meter enclosed are rated for PN50.

The proportioning system uses electrically driven foam pump. The pump and motor drive are designed for long-term load with over-temperature and current protection. High quality industrial components as well maintenance-free brushless motor (BLDC) ensure top performance of the injection system.



## SPECIFICATIONS

### POWER

**Supply Voltage** 22 -30 V DC

**Current** 30 A max., standard version (16 bar)  
50 A max., high pressure version (50 bar)

**Electrical Protection** overvoltage, transients, reverse polarity, load dump

### INTERFACES

**CAN** CAN, ISO 11898 2.0 A/B up to 1 Mbps, protocols

**CAN link** 1x T-connection, configurable termination 120 ohm via DIP switch, node ID definition via software

**USB** 1x USB 2.0, for firmware update

### FOAM PUMP AND COMPONENTS

**EN16327 classification** EN16327-PPPS 800/0.1-0.8w

**Pump Type** 3-plunger pump, 50 bar max.

**El. Motor** high performance BLDC motor, 1200 W, thermal protected

### Foam Injection Range

FJ12E 0.1 - 12 L/min @ 16 bars

FJ10EH 0.1 - 10 L/min @ 50 bars

**Fine Adjustment** 0.1%

**HMI - Control Panel** LCD TFT 7”, sunlight readable, anti-reflective glass, 10 soft keys + touch

### ENVIROMENT

**IP Class (IEC529)** IP65 pump assembly (pump, motor, controller, connectors), LCD, Flowmeter

**EMC Conformity** EN61000-6-2 noise immunity  
EN61000-6-4 radiation of interference

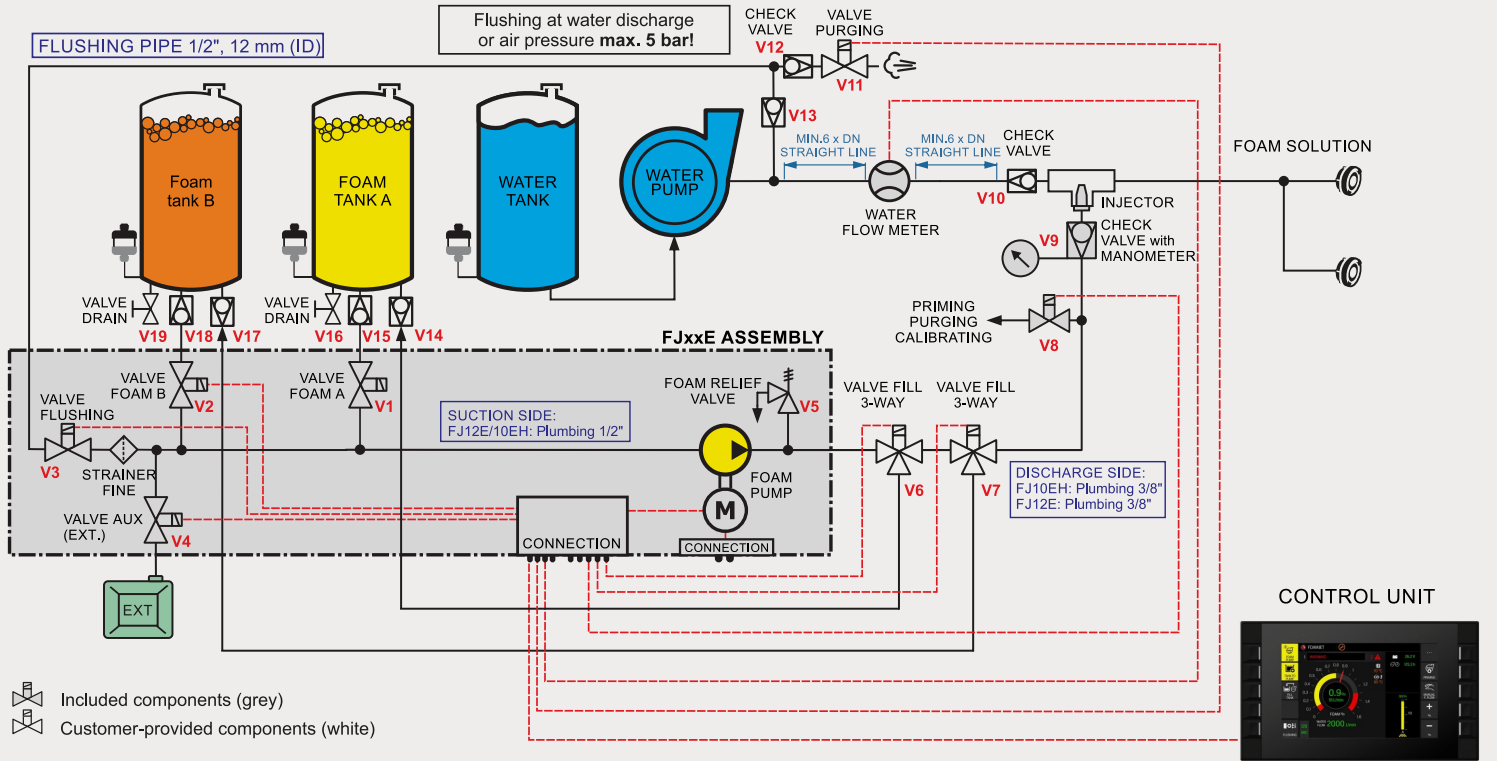
**Temperature Range**  
for pump operating 5° to +85°C (+41° to 185°F)  
for electronic units operating -30° to +85°C (-22° to 185°F)

### SIZE & WEIGHT

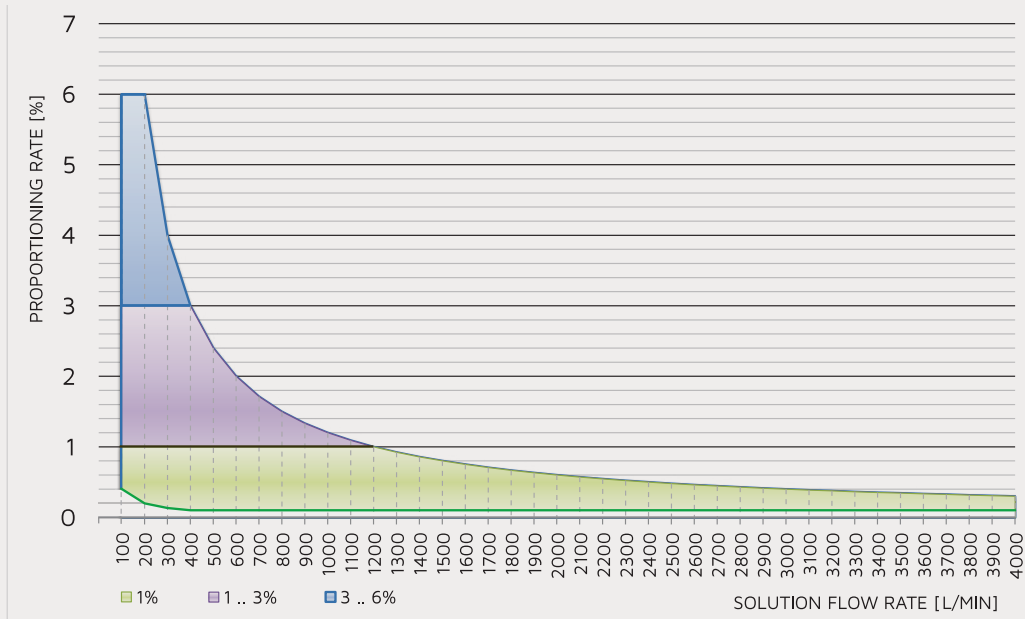
**W x H x D** 48 x 33 x 23 cm

**Weight** 25 kg

## PLUMBING DIAGRAM



## OPERATING RANGE



## PRODUCT CODE

FoamJet, electric motor driven

Ordering code example:

|                                                                                                    |          |                                        |          |                                                 |          |                            |          |                         |          |                                                                                                                                              |          |
|----------------------------------------------------------------------------------------------------|----------|----------------------------------------|----------|-------------------------------------------------|----------|----------------------------|----------|-------------------------|----------|----------------------------------------------------------------------------------------------------------------------------------------------|----------|
| <b>F</b>                                                                                           | <b>J</b> | <b>1</b>                               | <b>2</b> | <b>E</b>                                        | <b>H</b> | <b>-</b>                   | <b>1</b> | <b>E</b>                | <b>F</b> | <b>2</b>                                                                                                                                     | <b>0</b> |
| <b>FJ TYPE</b><br>10: 0.1 .. 10 LPM<br>12: 0.1 .. 12 LPM<br>25: 0.1 .. 25 LPM<br>45: 0.1 .. 45 LPM |          | <b>H: HIGH PRESSURE VERSION 50 BAR</b> |          | <b>1: ONE PRODUCT</b><br><b>2: TWO PRODUCTS</b> |          | <b>E: EXTERNAL SUCTION</b> |          | <b>F: FILL FUNCTION</b> |          | <b>WATER FLOW METER DIMENSION-INCH</b><br>20: DN50 = 2.0"<br>25: DN65 = 2.5"<br>30: DN80 = 3.0"<br>40: DN100 = 4.0"<br><b>T: TWIN SYSTEM</b> |          |