

# FOAMJET 25E



## FEATURES AND BENEFITS

- 1 Automatic foam dosing system in the range of 0.1 % to 8 %
- 2 Precision control with steps of 0.1 %
- 3 Top performance on extreme low injections – from 0.1 LPM
- 4 Large intensive bright 7" LCD for easy readability of process data
- 5 Magnetic-Inductive Flow sensors and BLCD motor
- 6 Injection of foam concentrate at the discharge side of the fire pump

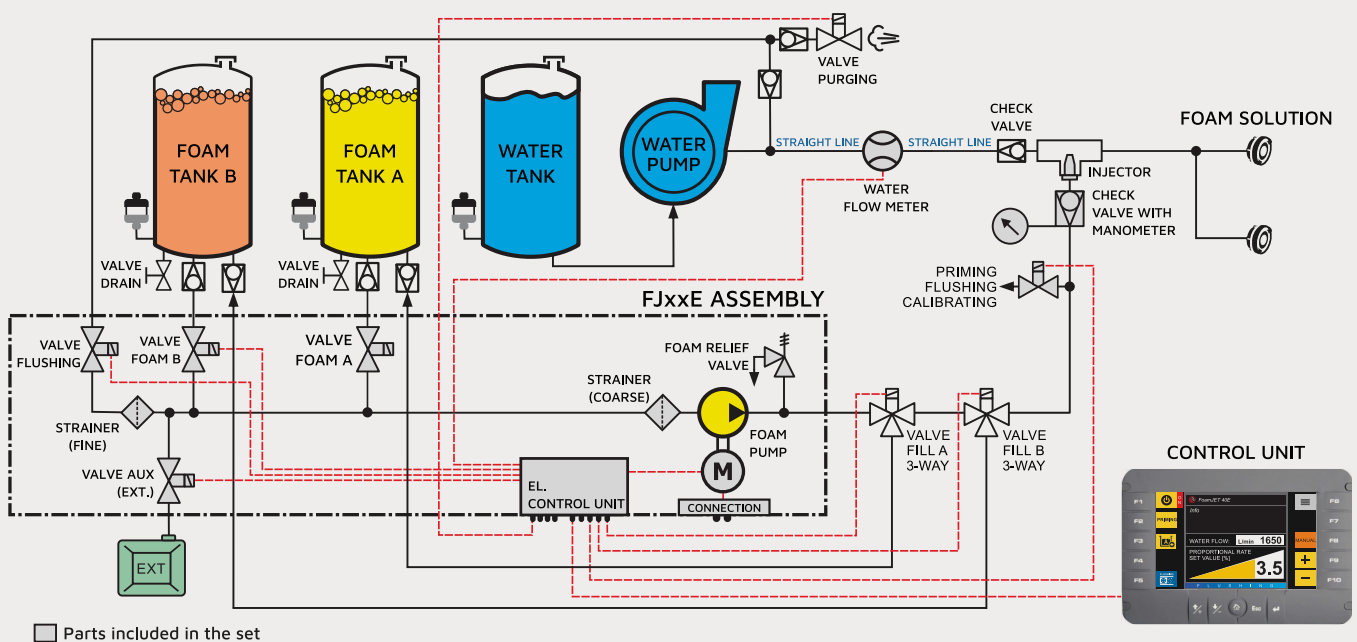
FOAMJET 12E/12EH is positive pressure proportioning system (EN 16327-PPPS) with digital control used to maintain selected constant foam-water proportion regardless of water flow fluctuations.

The system accurately delivers foam concentrate from 0.1 % to 6 % through a check valve/injector fitting, directly into the water discharge stream of the fire pump. The system can be setup also as a high-pressure unit allowing an injection pressure even up to

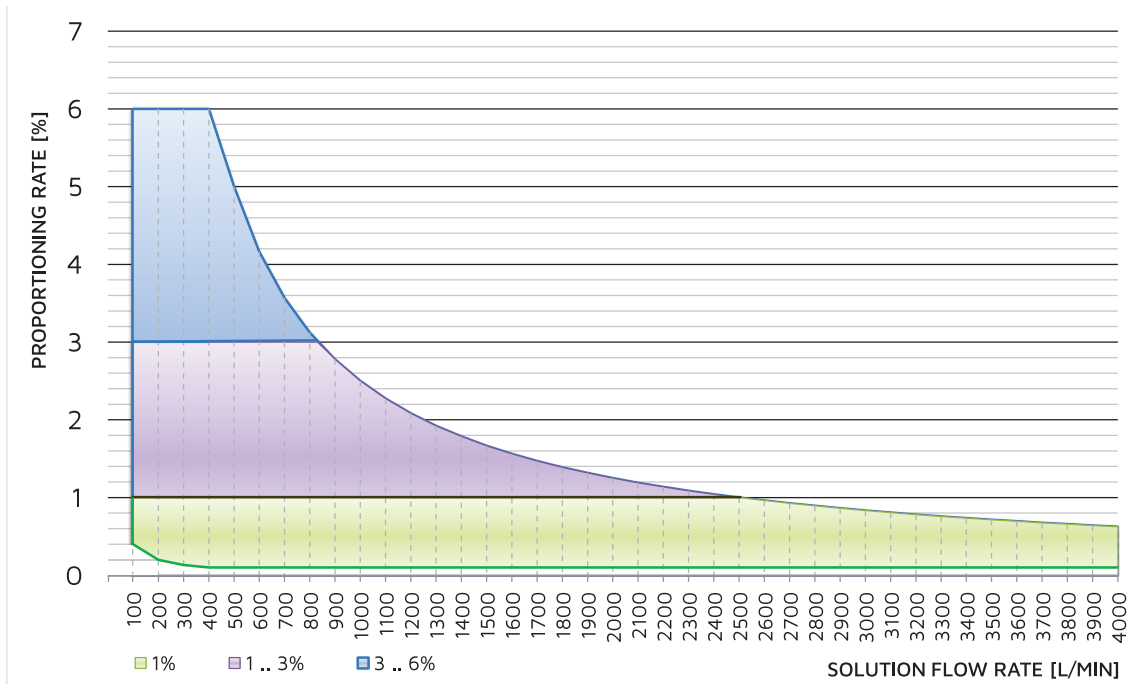
50 bars. In this case safety relief valve and flow meter enclosed are rated for PN50.

The proportioning system uses electrically driven foam pump. The pump and motor drive are designed for long-term load with over-temperature and current protection. High quality industrial components as well maintenance-free brushless motor (BLDC) ensure top performance of the injection system.

## PLUMBING DIAGRAM



# OPERATING RANGE



# SPECIFICATIONS

POWER	
<b>Supply Voltage</b>	22 -30 V DC
<b>Current</b>	55 A max., standard version (16 bar)
<b>Electrical Protection</b>	overvoltage, transients, reverse polarity, load dump
INTERFACES	
<b>CAN</b>	CAN, ISO 11898 2.0 A/B up to 1 Mbps, protocols
<b>CAN link</b>	1x T-connection, configurable termination 120 ohm via DIP switch, node ID definition via software
<b>USB</b>	1x USB 2.0, for firmware update
FOAM PUMP and COMPONENTS	
<b>EN16327 classification</b>	EN16327-PPPS 1600/0.1-1.5
<b>Pump Type</b>	3-plunger pump, 50 bar max.
<b>El. Motor</b>	high performance BLDC motor, 1200 W, thermal protected
<b>Foam Injection Range</b>	0.1 - 25 L/min @ 16 bars
<b>Fine Adjustment</b>	0.1%
<b>HMI - Control Panel</b>	LCD TFT 7", sunlight readable, anti-reflective glass, 10+5 soft keys

ENVIRONMENT	
<b>IP Class (IEC529)</b>	IP65 pump assembly (pump, motor, controller, connectors), LCD, Flowmeter
<b>EMC Conformity</b>	EN61000-6-2 noise immunity EN61000-6-4 radiation of interference
<b>Temperature Range</b> for pump for electronic units	storage -40° to +85°C (-40° to 185°F) operating 5° to +85°C (+41° to 185°F) operating -30° to +85°C (-22° to 185°F)
SIZE AND WEIGHT	
<b>W x H x D [mm]</b>	61 x 36 x 28 cm
<b>Weight</b>	34 kg

# ORDERING CODE

FoamJet, electric motor driven

Ordering code example:

<b>F</b>	<b>J</b>	<b>2</b>	<b>5</b>	<b>E</b>	<b>-</b>	<b>1</b>	<b>E</b>	<b>F</b>	<b>2</b>	<b>0</b>	
FJ TYPE <b>12:</b> 0.1 .. 12 LPM <b>25:</b> 0.1 .. 25 LPM <b>45:</b> 0.1 .. 45 LPM				<b>1:</b> ONE PRODUCT <b>2:</b> TWO PRODUCTS		<b>E:</b> EXTERNAL SUCTION		<b>F:</b> FILL FUNCTION		WATER FLOW METER DIMENSION-INCH <b>20:</b> DN50 = 2.0" <b>25:</b> DN65 = 2.5" <b>30:</b> DN80 = 3.0" <b>40:</b> DN100 = 4.0" <b>T:</b> TWIN SYSTEM	