

FOAMJET 12E/12EH



FEATURES AND BENEFITS

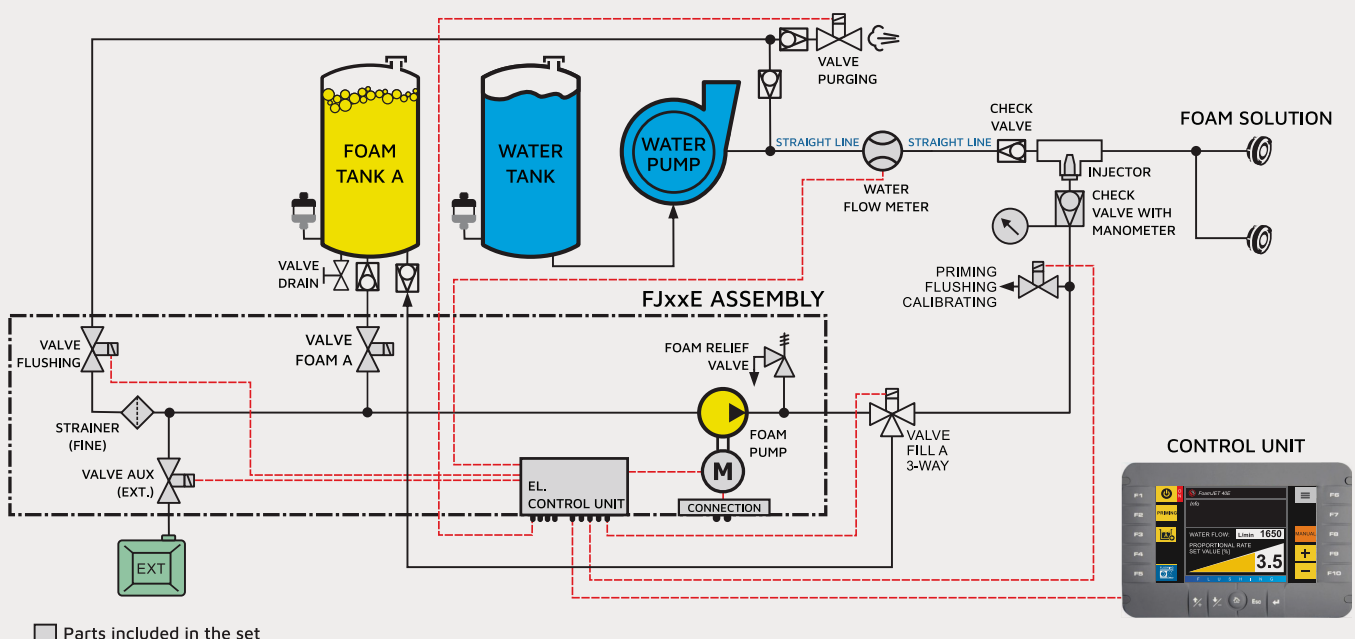
- 1 Automatic foam dosing system in the range of 0.1 % to 8 %
- 2 Precision control with steps of 0.1 %
- 3 Top performance on extreme low injections – from 0.1 LPM
- 4 Large intensive bright 7" LCD for easy readability of process data
- 5 Magnetic-Inductive Flow sensors and BLCD motor
- 6 Injection of foam concentrate at the discharge side of the fire pump

FOAMJET 25E is positive pressure proportioning system (EN 16327-PPPS) with digital control used to maintain selected constant foam-water proportion regardless of water flow fluctuations.

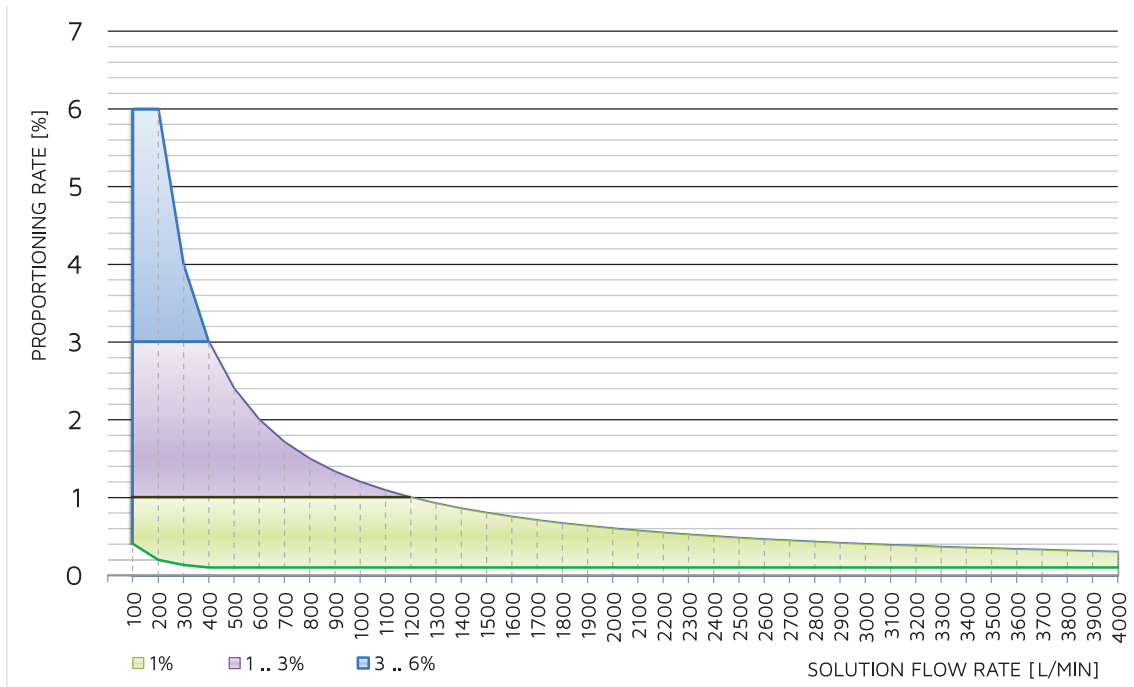
The system accurately delivers foam concentrate from 0.1 % to 8 % through a check valve/injector fitting, directly into the water discharge stream of the fire pump.

The proportioning system uses electrically driven foam pump. The pump and motor drive are designed for long-term load with over-temperature and current protection. High quality industrial components as well maintenance-free brushless motor (BLDC) ensure top performance of the injection system.

PLUMBING DIAGRAM



OPERATING RANGE



SPECIFICATIONS

POWER	
Supply Voltage	22 -30 V DC
Current	30 A max., standard version (16 bar) 50 A max., high pressure version (50 bar)
Electrical Protection	overvoltage, transients, reverse polarity, load dump
INTERFACES	
CAN	CAN, ISO 11898 2.0 A/B up to 1 Mbps, protocols
CAN link	1x T-connection, configurable termination 120 ohm via DIP switch, node ID definition via software
USB	1x USB 2.0, for firmware update
FOAM PUMP and COMPONENTS	
EN16327 classification	EN16327-PPPS 800/0.1-0.8
Pump Type	3-plunger pump, 50 bar max.
El. Motor	high performance BLDC motor, 1200 W, thermal protected
Foam Injection Range	0.1 - 12 L/min @ 16 bars 0.1 - 10 L/min @ 50 bars
Fine Adjustment	0.1%
HMI - Control Panel	LCD TFT 7", sunlight readable, anti-reflective glass, 10+5 soft keys

ENVIRONMENT	
IP Class (IEC529)	IP65 pump assembly (pump, motor, controller, connectors), LCD, Flowmeter
EMC Conformity	EN61000-6-2 noise immunity EN61000-6-4 radiation of interference
Temperature Range	storage -40° to +85°C (-40° to 185°F) for pump operating 5° to +85°C (+41° to 185°F) for electronic units operating -30° to +85°C (-22° to 185°F)
SIZE AND WEIGHT	
W x H x D [mm]	48 x 33 x 23 cm
Weight	25 kg

ORDERING CODE

FoamJet, electric motor driven

Ordering code example:

F	J	1	2	E	H	-	1	E	F	2	0
FJ TYPE 12: 0.1 .. 12 LPM 25: 0.1 .. 25 LPM 45: 0.1 .. 45 LPM		H: HIGH PRESSURE VERSION 50 BARS		1: ONE PRODUCT 2: TWO PRODUCTS		E: EXTERNAL SUCTION		F: FILL FUNCTION		WATER FLOW METER DIMENSION-INCH 20: DN50 = 2.0" 25: DN65 = 2.5" 30: DN80 = 3.0" 40: DN100 = 4.0" T: TWIN SYSTEM	