



**EMITTER**  
ELECTRONICS  
innovative · reliable · flexible



# MMX PCU-WKPG

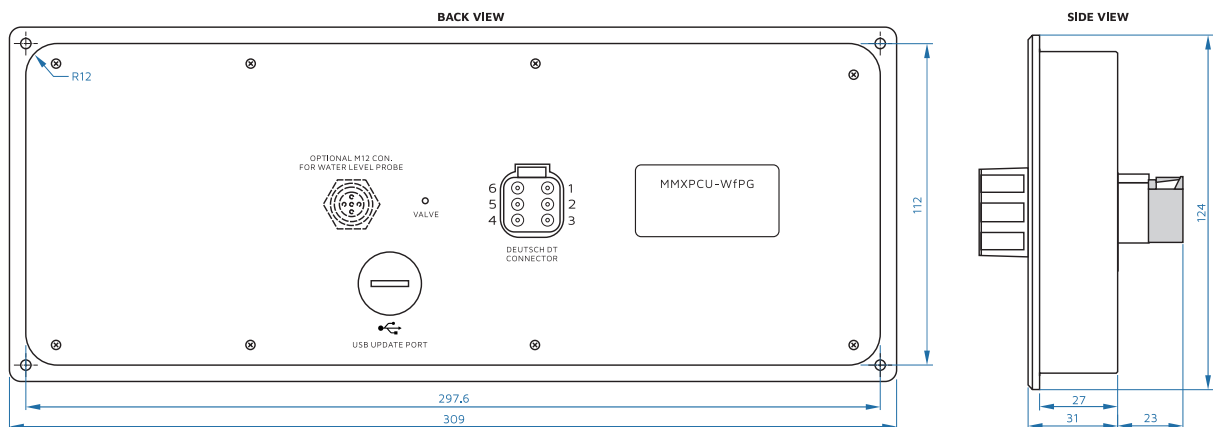


Icons shown on this keypad are for visual demonstration only.

## Features and Benefits

- 1 Pressure Governor With Cavitation Warning
- 2 Alphanumeric Super Bright Led Display
- 3 Integrated Water Tank Level Gauge
- 4 Integrated Keypad - 18 Keys
- 5 Integrated 10 Warning Lights
- 6 Selection of Pressure by Rotary Knob - Encoder
- 7 Acoustic Signal - Integrated Buzzer

The **MMX PCU-WKPG** is an electronic Pump Control Unit with an integrated pressure governor, water tank level gauge, keypad, warning lights and super bright alphanumeric LED display. It can also be used to control other vehicle systems such as valves, lighting, display engine data and water pump data, display pump warning messages as cavitation temperature, etc. The main function of PCU is Pressure Governor which allows automated regulation of the engine RPMs according to the pressure fluctuations in the pump. The automatic pressure regulation is turned ON by turning the rotation switch - encoder.

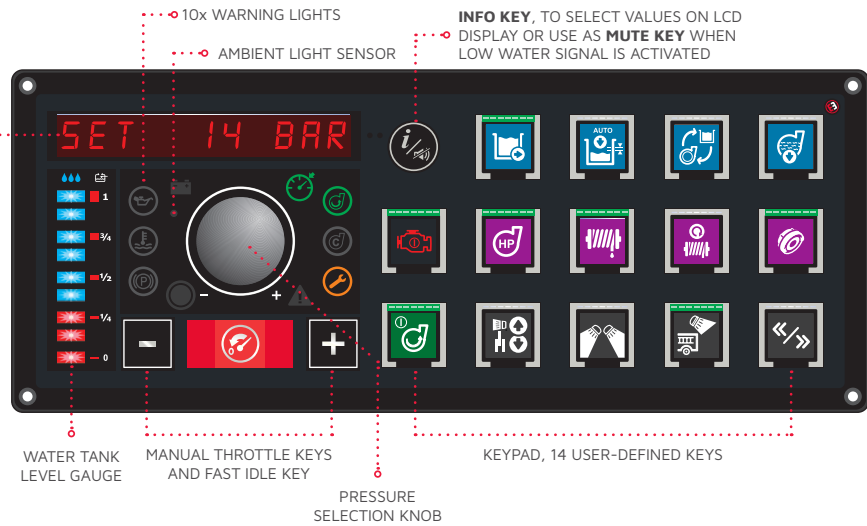


The integrated keypad is programmable. Each key can be configured to operate as a switch, push button or both as a special feature. Key label graphics are customizable and coloured

according to function groups for easy recognition. Unused keys can be screened off with a dark label.

### INFO DISPLAY

- GOVERNOR SET VALUE
- PUMP RPM
- PUMP TEMPERATURE
- PUMP WORKING HOUR
- VEHICLE BATTERY VOLTAGE
- ENGINE RPM
- OIL PRESSURE
- ENGINE TEMPERATURE
- ERROR MESSAGES
- SETTINGS
- ETC ...

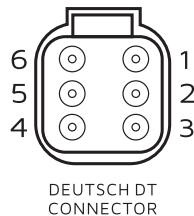


## Connection

### CONNECTION Deutsch DT06-6S

#### PIN DESCRIPTION

1	BATTERY + ("15")
2	CAN L
3	CAN L, int. shorted to PIN 2
4	CAN H
5	CAN H, int. shorted to PIN 4
6	BATTERY -



## Specifications

POWER	
Supply Voltage	8-32 V DC
Current	1.2 A maximum
Electrical Protection	overvoltage, transients, reverse polarity, load dump
INTERFACES	
CAN	1 x CAN
CAN termination	120 ohm, DIP switch
USB	1x USB 2.0, for firmware update
FEATURES	
Pressure governor	automatic pressure regulation with cavitation warning
Display	alphanumeric super bright LED display, 11 digit
Warning lights	4 red, 4 amber, 2 green, total 10 LEDs
Tank Level Gauge	1x, blue/red LED
Indicator increments	1/8
Keypad	14 soft keys (programmable) + 4 hard keys (pre-defined)
Signal Indicator	super bright green LED bar
Icons	freely selectable icons
Key Design	RIM-embossed keys with tactile feedback, operating force 8N, white backlit icons
Operating Life	>250.000 cycles
KEY dimension	23 x 23 mm
Rotary Knob	Encoder 16 pos. / 360° with push button
Day/Night operation	automatic – integrated light sensor
Acoustic Signal	Integrated Buzzer 100 dB

ENVIRONMENT	
IP Class (IEC529)	IP67
EMC Conformity	EN61000-6-2 noise immunity EN61000-6-4 radiation of interference
Temperature Range	storage -40° to +85°C (-40° to 185°F) operating -40° to +85°C (-40° to 185°F)
ENCLOSURE	
Housing Material	Aluminium
Mounting	in-dash with 4 screws M3 or 2.9 mm tapping screws
Matting Connector	Deutsch DT06-06S
SIZE AND WEIGHT	
W x H x D [mm]	309 x 123 x 38, without matting connector
Weight	1.2 kg

## Product Code

**MMPCU-WKPG** Pump control unit with pressure governor, water tank level gauge, keypad, warning lights

**MMXPCU-WK** Pump control unit with water tank level gauge, keypad, warning lights

**For more options please contact the supplier.**



**EMITTER ELECTRONICS**

Engineering, production and service  
Tržaška cesta 65, SI-2000 Maribor, Slovenia, Europe

Phone +386 5 995 1 973  
mobile +386 41 726 476

info1@emitter.org  
[www.emitter.org](http://www.emitter.org)